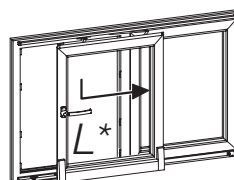
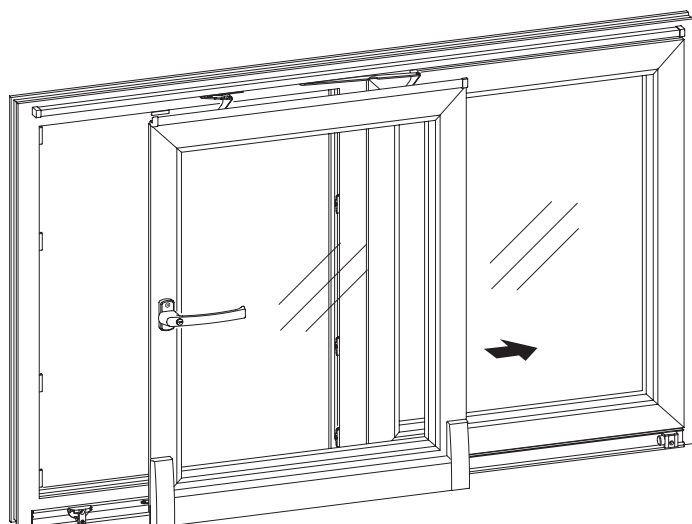


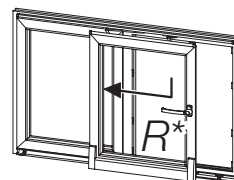
ATRIUM® SP comfort

(GB)

Additional instruction – version without night vent



* HAUTAU version Left
= DIN EN 12519 Right
(right-opening)



* HAUTAU version Right
= DIN EN 12519 Left
(left-opening)

The figures within these mounting instructions refer to HAUTAU version Left (*DIN EN 12519 Right*).

For HAUTAU versions Right (*DIN EN 12519 Left*) measures have to be applied correspondingly.

Note:

This document is only valid in combination with the mounting instruction **ATRIUM® SP comfort**, item code: 234991.

In these instructions only the differing working steps will be described, which are necessary to mount an element without night vent.

For further **mounting applications** you need **following additional instructions**:

– ATRIUM® SP comfort additional instruction – burglary-resistance version (**RC2 applicable**), item code 238283.

Contents

	page
Fittings, Mounting of strikers	2
Mounting of striker, scheme C	3
Mounting stroke limitation	4

Abbreviations

FFB	Sash rebate width
FFH	Sash rebate height

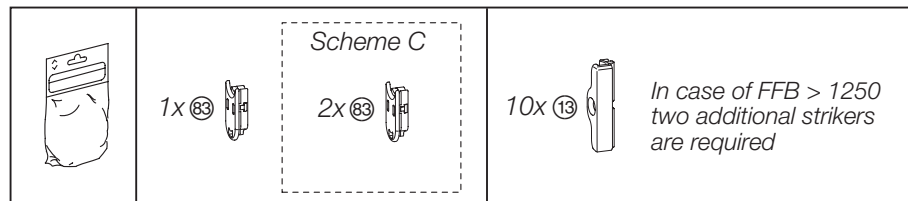
All measurements in these instructions are indicated in millimetres (mm).

Fittings, Mounting of strikers

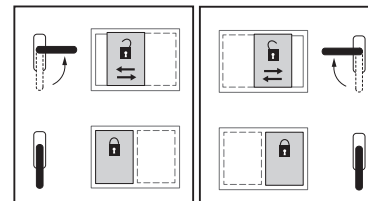


HAUTAU
OPENS NEW DIMENSIONS

Different parts to basic fittings



Instruktion sticker

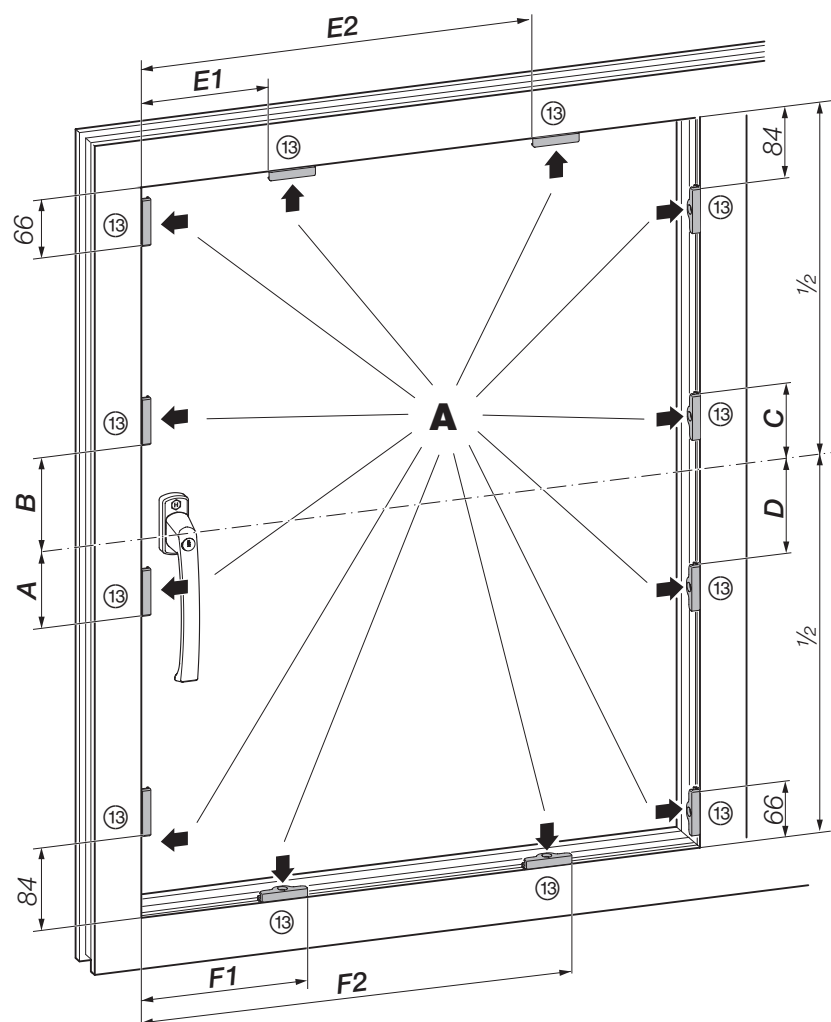


DIN EN 12519 Right

DIN EN 12519 Left

Mounting of strikers

A Fix strikers 13 according to chart.



To use:



3.9 x ...

All measurements
mentioned below
are valid for 12 mm
fittings cavity.

FFH	A	B	C	D
650 ... 1100	90 ¹⁾	—	90 ¹⁾	—
1000 ... 1450	—	110 ²⁾	—	110 ²⁾
1451 ... 2350	309	341	309	341

¹⁾ for gear size 110

²⁾ for gear size 140

FFB	E1	E2	F1	F2
751 ... 900	412	—	393	—
901 ... 1050	504	—	485	—
1051 ... 1250	654	—	635	—
1251 ... 1450	304	904	285	885
1451 ... 1650	504	1104	485	1085

Mounting of strikers scheme C

Mounting sequence for frames

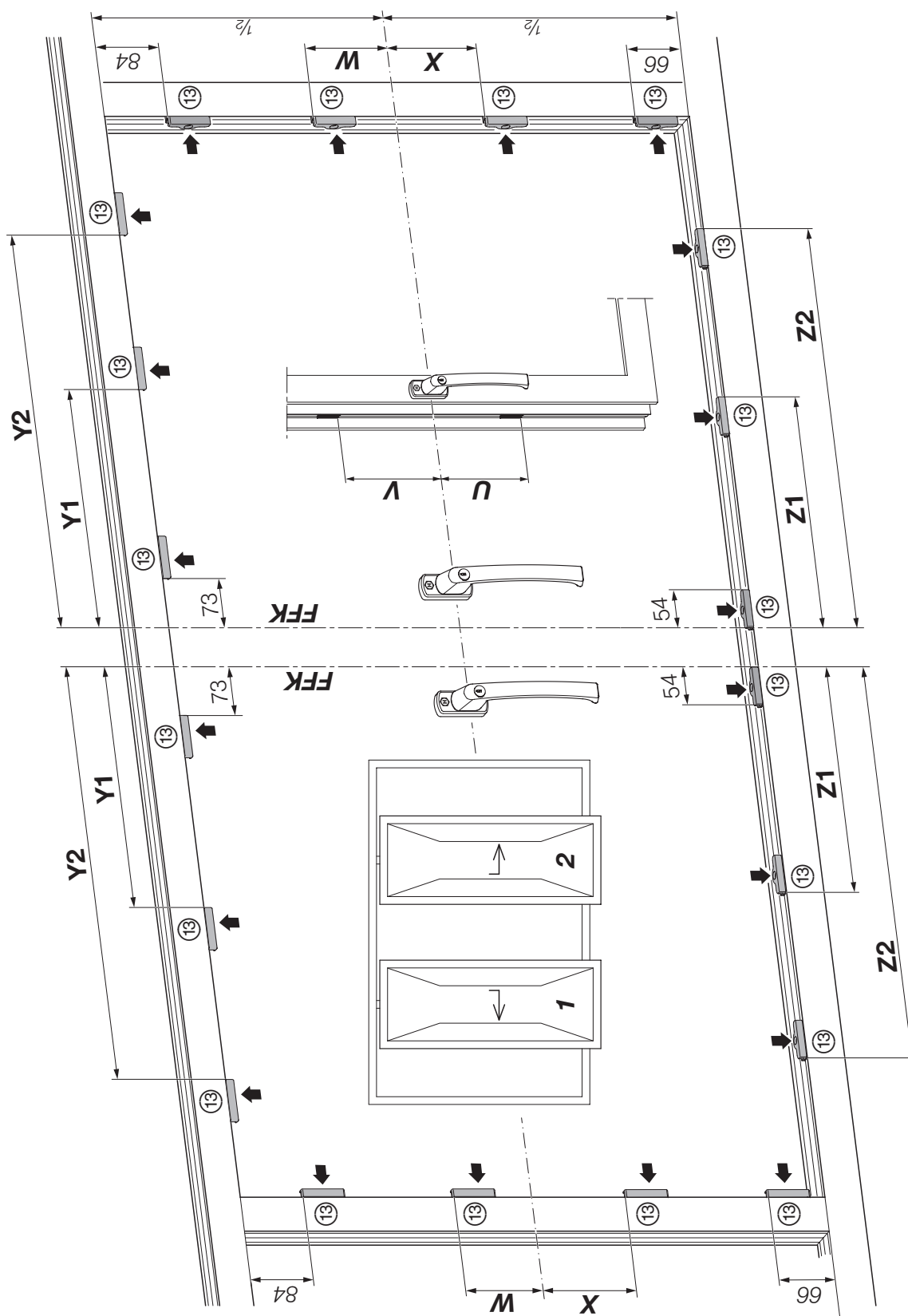
A Fix strikers (13) according to chart.

All measurements mentioned below are valid for 12 mm fittings cavity.

To use:



3.9 x ...



FFB	Y1	Y2	Z1	Z2
751 ... 900	400	—	381	—
901 ... 1050	492	—	473	—
1051 ... 1250	642	—	623	—
1251 ... 1450	292	892	273	873
1451 ... 1650	492	1092	473	1073

FFH	U	V	W	X
650 ... 1000	90 ¹⁾	—	90 ¹⁾	—
1001 ... 1450	—	110 ²⁾	—	110 ²⁾
1451 ... 2350	309	341	309	341

¹⁾ for gear size 110
²⁾ for gear size 140

Mounting stroke limitation

Insertion of stroke limitation in Corner(s)

fig. 1

A Turn the handle into position „closed“.

B Insert stroke limitation 83 into the top corner 19 on handle side.

fig. 2 (schema C)

A Turn the handle into position „closed“.

B Insert stroke limitation 83 into the bottom corners 19 on handle sides.

fig. 1

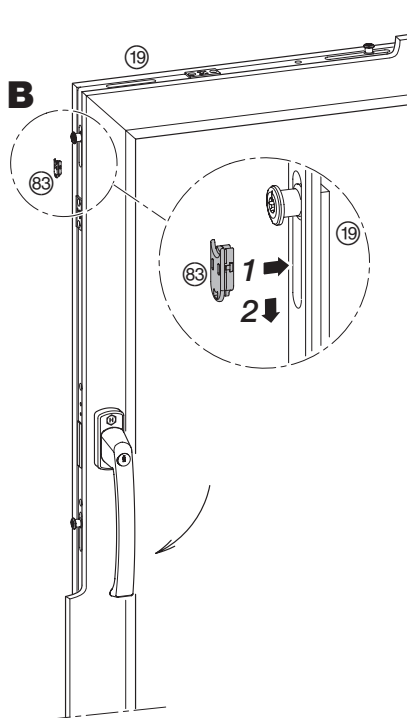


fig. 2

